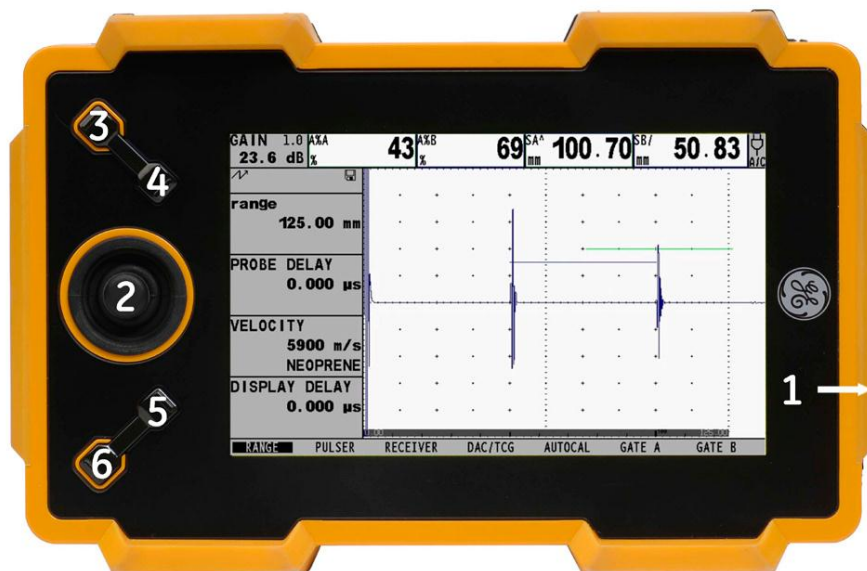


USM Go Software Upgrade Procedures

- Copy the USM Go upgrade file (.sdu) to the root directory of an SD card. For proper operation, only one .sdu file should be present on the SD card.
- Insert SD Card into SD Card slot on the USM Go instrument.
- With the USM Go turned off, Press & Hold the FUNCTION 2 (#6), GAIN DOWN (#4) and POWER buttons until the instrument turns on.
Notes: “Flash Upgrade Mode/Loading File” should be displayed, if not turn off instrument and ensure all three keys are pressed firmly.
- Upgrade process will take approximately 5 minutes, and the lines of operating code can be seen upgrading on the screen of the USM Go.
- Instrument will automatically shut off when upgrade process is completed.



- Restart the instrument.
- **Note:** The new version of operating software will now be displayed on the splash screen.
- Your instrument is now fully upgraded, and ready to use.

GE Measurement & Control Solutions
50 Industrial Park Road
Lewistown, PA 17044
Tel: 1 866 243 2638
Tel: 1 717 447 1562
E-mail: geit-info@ge.com