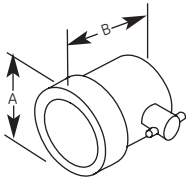


# Wear Resistant Transducers—North American Standards

## Type RHP



Element Ø		A		B	
mm	in	mm	in	mm	in
13	0.50	29.2	1.15	38.1	1.50
25	0.75	35.6	1.40	38.1	1.50
19	1.00	41.9	1.65	38.1	1.50

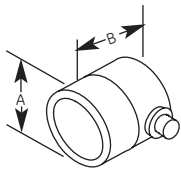


## Standard Contact Transducers—Type RHP-CR (Side Mount BNC), RHP-CS (Top Mount BNC)

Freq. (MHz)	Element Ø		Order Code				Freq. (MHz)	Element Ø		Order Code			
	mm	in	Alpha Series	Gamma Series	Accessories			mm	in	Alpha Series	Gamma Series	Accessories	
.5	19	0.75		250-043-CR 250-123-CS	Cables BNC 118-140-016 LEMO-1 118-140-018	3.5	13	0.50		243-043-CR 243-123-CS	Cables BNC 118-140-016 LEMO-1 118-140-018		
	25	1.00		260-043-CR 260-123-CS			19	0.75		253-043-CR 253-123-CS			
1.0	13	0.50		241-043-CR 241-123-CS			25	1.00		263-043-CR 263-123-CS			
	19	0.75		251-043-CR 251-123-CS			13	0.50	144-043-CR 144-123-CS	244-043-CR 244-123-CS			
2.25	25	1.00		261-043-CR 261-123-CS			19	0.75	154-043-CR 154-123-CS	254-043-CR 254-123-CS			
	13	0.50	142-043-CR 142-123-CS	242-043-CR 242-123-CS			25	1.00	164-043-CR 164-123-CS	264-043-CR 264-123-CS			
2.25	19	0.75	152-043-CR 152-123-CS	252-043-CR 252-123-CS	10.0	13	0.50	246-043-CR 246-123-CS					
	25	1.00	162-043-CR 162-123-CS	262-043-CR 262-123-CS									

Custom configurations are available by special order.

## Type F



Element Ø		A		B	
mm	in	mm	in	mm	in
6	0.25	12.7	0.50	16.8	0.66
10	0.375	16.0	0.63	16.8	0.66
13	0.50	19.1	0.75	16.8	0.66



## Fingertip Contact Transducers—Type F

Freq. (MHz)	Element Ø		Order Code				Freq. (MHz)	Element Ø		Order Code			
	mm	in	Benchmark Series	Alpha Series	Gamma Series	Accessories		mm	in	Benchmark Series	Alpha Series	Gamma Series	Accessories
2.25	6	.250	822-000	122-000	222-000	Cables BNC 118-140-012	5.0	6	.250	824-000	124-000	224-000	Cables BNC 118-140-012
	10	.375	832-000	132-000	232-000			10	.375	834-000	134-000	234-000	
	13	.500	842-000	142-000	242-000			13	.500	844-000	144-000	244-000	
3.5	6	.250		123-000	223-000	LEMO-1 118-140-022	10.0	6	.250		126-000	226-000	LEMO-1 118-140-022
	10	.375		133-000	233-000			10	.375		136-000	236-000	
	13	.500		143-000	243-000			13	.500		146-000	246-000	

Custom configurations are available by special order.